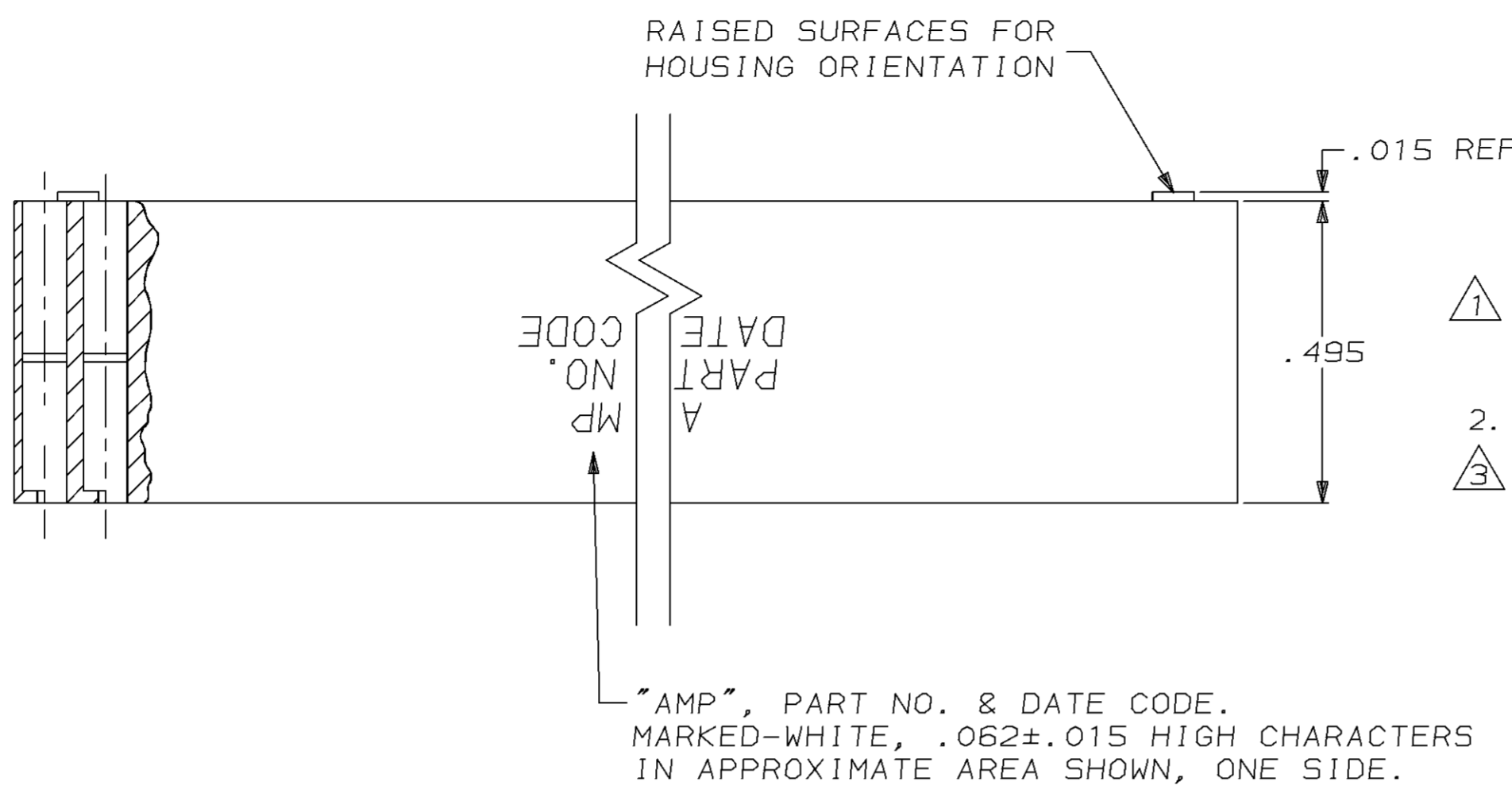


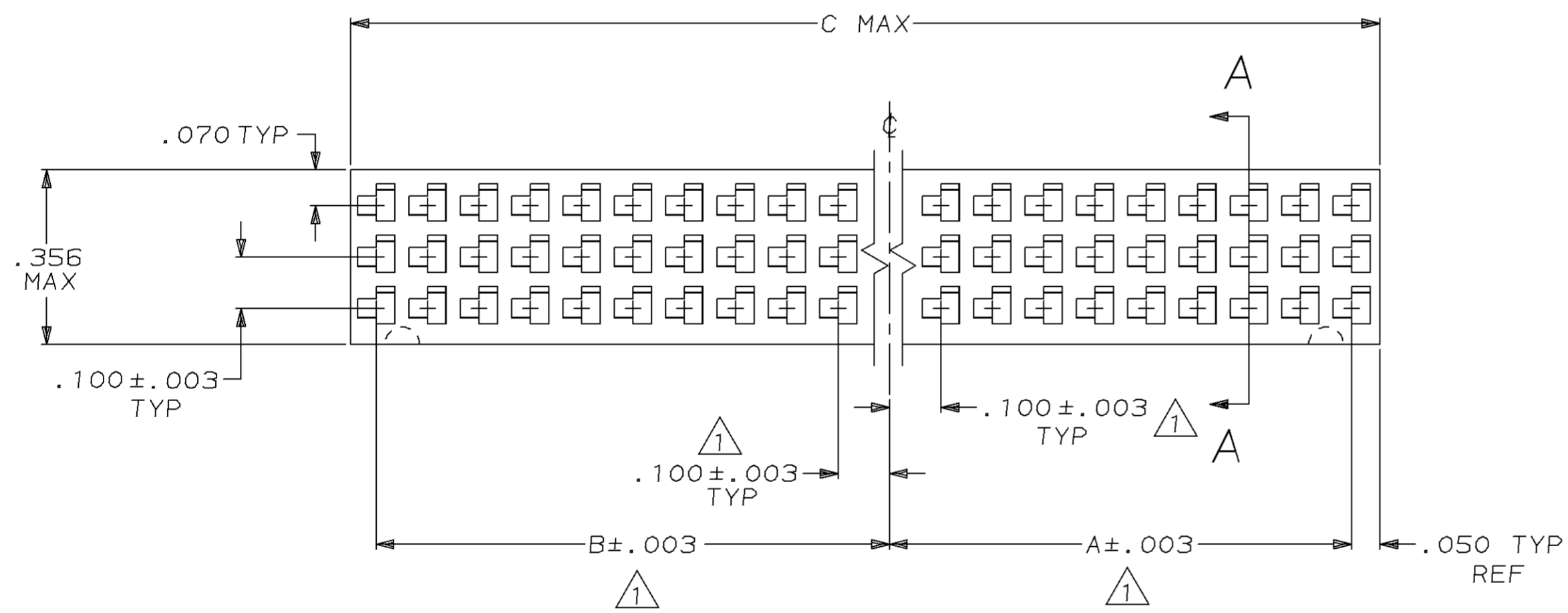
THIS DRAWING IS UNPUBLISHED. RELEASED FOR PUBLICATION ,19 .
 © COPYRIGHT 19 BY AMP INCORPORATED. ALL INTERNATIONAL RIGHTS RESERVED.

MOD 30 LOC AD DIST 39

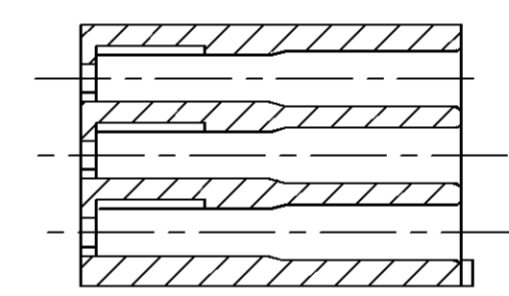
P		F		ZONE		LTR		DESCRIPTION	DATE	APPD.
								D REDRAWN	-	9-14-89
								E REV LOC & DIST AD-4171	3-90	BF
								F OBS PER 0010-1049-93	12-93	PS
								G OBS PER 0010-1011-93	1-94	PS
								H REV PER 0010-1043-93	3-11-94	PS
								J REV PER 0010-0768-93	3-11-94	PS
								K REV PER 0010-0684-94	5-23-94	PS



- 1 CAVITY LOCATION DIMENSIONS INCREASE IN INCREMENTS OF .100 TOLERANCE NON-CUMULATIVE.
- 2. USE EXTRACTION TOOL 91065-1 TO REMOVE RECEPT CONTACTS.
- 3 OBSOLETE PART NUMBERS.



SECTION A-A



C	B	A	NO. OF POS.	PART NUMBER UNMARKED	PART NUMBER MARKED
1.405	.600	.700	42	86308-5	86308-6
2.005	.900	1.000	60	86308-3	86308-4
.905	.400	.400	27	86308-2	86308-1

DO NOT SCALE PRINT. UNLESS SPECIFIED DIMENSIONS IN INCHES TOLERANCES ON : 2 PLC DEC ± - 3 PLC DEC ± .005 ANGLES ± 0°30'		DR 9-14-89 BOB BOLES BG		AMP INCORPORATED Harrisburg, Pa. 17105	
MATERIAL GLASS FILLED NYLON COLOR-BLACK		CHK 10-23-89 J. GESFORD			
FINISH -		APPD 10-23-89 J. GESFORD		NAME HOUSING, CRIMP SNAP-IN, TRIPLE ROW, .100 CENTERS, MOD IV	
		APPD 10-23-89 FLINCHBAUGH		SIZE C	
		PRODUCT SPEC -		FSCM NO 00779	
		APPLICATION SPEC -		DRAWING NO 86308	
		WEIGHT -		SCALE 4:1	
				SHEET 1 OF 1	